

Company Logo and Contact Info



Disclaimer with Company Name

aquaSketch The underwater writing and drawing system
www.aquasketch.com 1-800-282-1608
aquaSketch Vellum Care and Maintenance
After diving, always remove the vellum from the Minno and rinse in fresh water. Avoid prolonged exposure to direct sunlight.
DISCLAIMER - THIS MAP AND THE INFORMATION CONTAINED WITH IT, IS INTENDED FOR USE ONLY BY CERTIFIED SCUBA DIVERS OR STUDENTS UNDER THE SUPERVISION OF A CERTIFIED SCUBA INSTRUCTOR. DEPTHS AND LOCATIONS ARE SUBJECT TO CHANGE AND DIVERS ARE RESPONSIBLE FOR THEIR OWN SAFETY AND ORIENTATION. AQUASKETCH INC. AND RECREATIONAL CONCEPTS DEVELOPMENT CORPORATION SHALL NOT BE LIABLE FOR ANY DAMAGES OR INJURY SUFFERED BY THE USE OF OR IN RELIANCE UPON THIS PRODUCT OR THE INFORMATION CONTAINED ON IT.

Index

- End of Sheet
CONTENTS:
1. Emergency Contact Info
2. Dutch Springs Rules and Regulations
3. Dive Log
4. Things to keep in mind during the dive
5. Common Hand Signals
6. How to follow compass settings
7. Overview Map
8. Map 1 (East)
9. Legend
10. Map 2 (West)
11. Slate Area
12. The Fish at Dutch Springs
13. End of Dive - Note Area

Emergency Contact Info Module #1

Note: Fill in contact info BEFORE your dive
1. Emergency Contact Information
Name
In case of emergency contact
Address
e-mail
Phone Dive Insurance #
DAN Emergency Phone Number: 1-919-684-9111

Dive Site Rules and Regulations

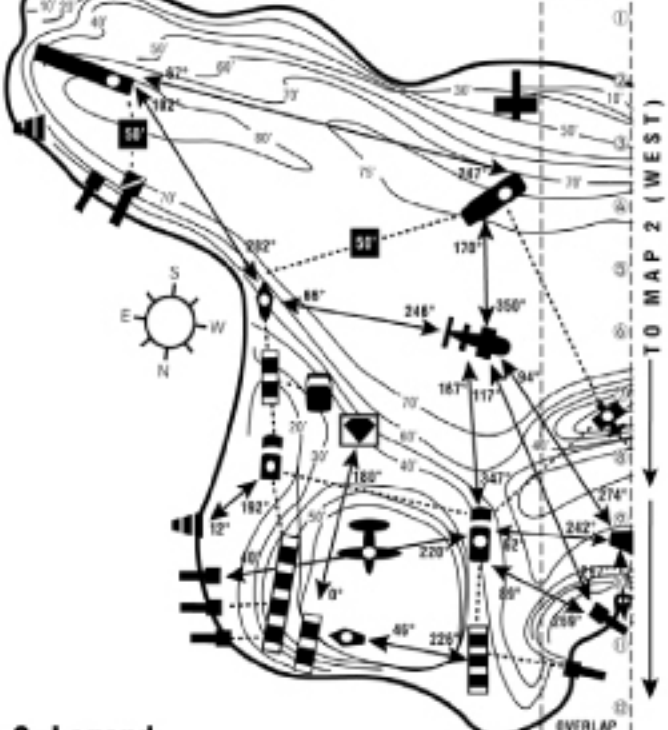
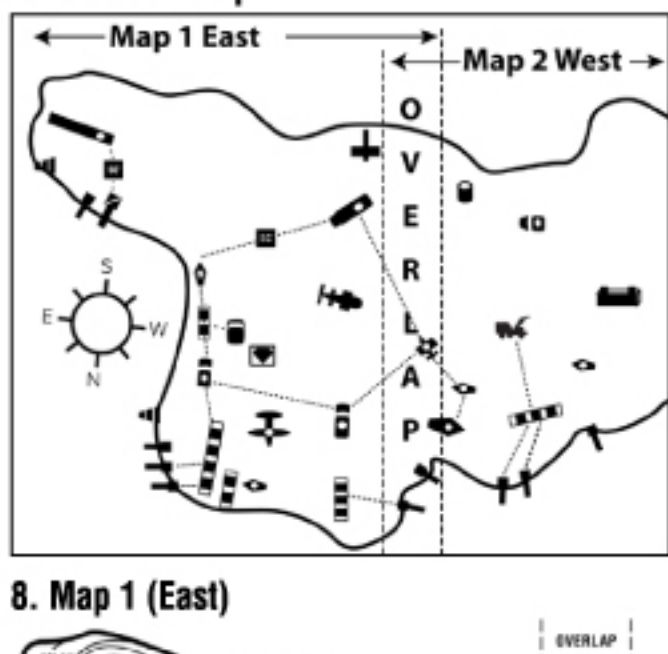
2. Dutch Springs Rules and Regulations
- No one is permitted to dive alone. (The only exception is solo diving certified divers - registered at the admissions office - who are diving with a locator.)
- No artifacts, property or underwater structures may be chipped, damaged or removed from the site.
- No spear guns or other weapons.
- Last Dive of the Day:
Under the Water by 5:00 PM
Gates are locked at 6:00 PM
*During Daylight Savings subtract 1 hour to above times
- Saturday Night Diving
- One Dive Only
- Purchase wristband at Admissions Office by 5:00PM
Sunset: PM
Earliest in Water: PM (30 min. before sunset)
Must be Under Water by: PM (30 min. after sunset)
Out of the Water by: PM (2 hrs. after sunset or 10PM, whichever is earlier)

Dive Log Module #2

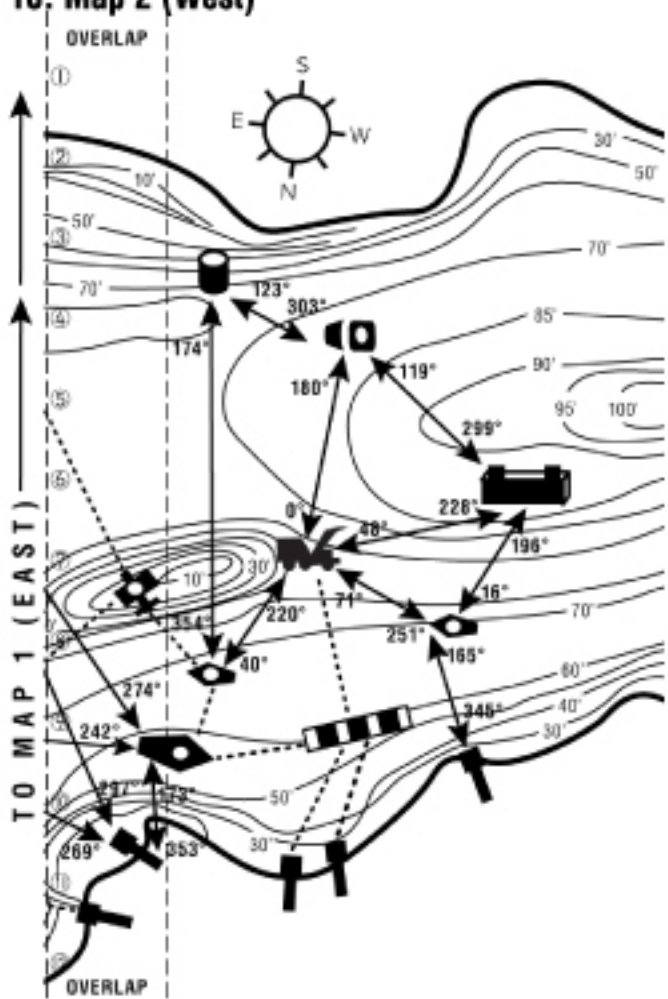
3. Dive Log
Dive# Date Entry location
Time in: Time out: Max. Depth:
Bottom Time: EANx type:
Visibility:
Total hrs. to date Total hrs. this dive
Weight Gear

Custom Dive Site Map with Compass Headings, Points of Interest, Topographic Map

NEVER ADJUST THE BEZEL before you reach your destination.



9. Legend
White dots on icons are surface markers
Observation Docks, Surface Docks, StairCase, Underwater Ropes, Platforms - 25', Diamond Reef - 25', Platform - 50', Van - 40', Fire Truck - 20', Helicopter - 30/70, Pump House - 60', Navy Helldiver - 60', School Bus - 40', Old Plane - 30', Cessna - 20', Silver Comet Cruiser - 60', Tanker - 75', Small Boats - 40, 50, 60, Dynamite Skack - 70', Trolley - 60', Be5 Track - 80', Crane - 60', Tanker - 75'



Slate Area Module #18

11. SLATE AREA

Dive Site Fish Species



End of Dive Module #10

13. End of Dive Note Area:
Time out: Remaining PSA:
Notes:

Company Logo and Contact Info



©2011 aquaSketch Inc.